

Fees

- People with special needs, their respective parents, family members or caretakers are welcome to join our membership.
- Membership dues are paid on a per family basis. All family members could enjoy the facilities in the centre after registration.
- Membership fee is \$21 per year. Membership will be valid until 31 March of each year.

Value-Added service

- ▶ Mutual support from Chih Ai Parents' Association
- ▶ Professional consultation
 - ▶ Occasional child care service on long school holidays
 - ▶ Emergency living/ food assistance

Since 1952, **Hong Kong Christian Service (HKCS)** has been working towards a humane and just society. We provide the needy with suitable, professional and quality services genuinely. We care for the disadvantaged and the neglected. We uphold our vision of "Towards a Benevolent and Just Society, Holistic Development for All" by instilling hope, advocating justice and promoting harmony for our people and society.

✉ info@hkcs.org

☎ 2731 6316

☎ 2731 6333

🏠 33 Granville Road, Tsimshatsui, Kowloon, Hong Kong

🌐 www.hkcs.org

📘 www.facebook.com/hkcs.org

Hong Kong Christian Service is a registered charity and a company limited by guarantee.

Print Date : Feb 2021

Print Quantity : 1000

Service Hours

Our centre operates 6 days a week, providing night and weekend sessions to cater the needs of different families and working caretakers. Our centre's opening hour is as follows:

	Mon	Tue	Wed	Thur	Fri	Sat	Sun
Opening hours	9:00 a.m.	12:00 p.m.	9:00 a.m.	9:00 a.m.	12:00 p.m.	9:00 a.m.	Closed
	6:00 p.m.	8:00 p.m.	6:00 p.m.	6:00 p.m.	8:00 p.m.	6:00 p.m.	

- Closed on Sundays and public holidays
- Remain open when typhoon signal number 3 / rainstorm red warning is hoisted ; closed when typhoon signal number 8 or above is hoisted / rainstorm black warning is issued before the commencement of normal opening hours
- Provide occasional child care service on long school holidays

Contact Us

To-gather Parents Resource Centre (Kwun Tong)

Address Units 1017-1018, 10/F, Chevalier Commercial Centre, 8 Wang Hoi Road, Kwun Tong, Kowloon, Hong Kong

- Tel: 3993 1055/6289 3084
- Fax: 3956 2144
- Email: prckt@hkcs.org

To-gather Parents Resource Centre (Shamshuipo)

Address Unit 910, 9/F, Tower 1, Cheung Sha Wan Plaza, 833 Cheung Sha Wan Road, Kowloon

- Tel: 3703 9488/9085 9563
- Fax: 3705 3824
- Email: prcssp@hkcs.org

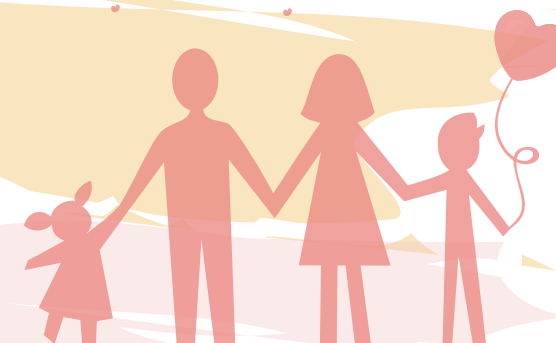


HONG KONG
CHRISTIAN SERVICE
care for all excel in all

To-gather

Parents Resource Centre

匯愛家長資源中心





Introduction

To-gather Parents Resource Centre subsidized by the Social Welfare Department (SWD), has been launched since March 2019. HKCS now operates 2 PRCs for the provision of transdisciplinary and diversified supportive services for people with special needs and their respective parents or caretakers in Kwun Tong and Shamshuipo districts. PRC (Kwun Tong) includes a specialized ethnic minority (EM) unit and provides tailored services for EM families in need. The cluster of districts includes Kwun Tong, Wong Tai Sin and Shatin districts.

With the emphasis of family-centred, strength-based, and positive meaning making approaches, our centre provides a platform for parents or caretakers of people with special needs to gather, share and exchange their unique experiences. This aims to break through their limitations, build a positive image and promote acceptance towards people with special needs to foster their integration into the society.



Purposes

- Enhance the wellness of parents / caretakers and their ability to manage emotional stress
- Enhance the caretaking capacity of parents / caretakers for their family members with special needs
- Facilitate positive interaction among family members
- Facilitate the parents / caretakers to identify their strength and regain self-mastery in daily life
- Develop community support network for mutual-aid
- Enhance public awareness and acceptance towards people with special needs

Target Service Users

- People with special needs and their respective parents, family members or caretakers

Application Procedures

- Applicants can obtain the membership application form from our website or our centre in person. Please complete and return the form with a crossed cheque (payable to "Hong Kong Christian Service") to our centre.

Withdrawal Procedure

- Members who want to withdraw from the service must notify the centre in writing.
- Upon receiving the withdrawal notice, our centre will immediately terminate the membership status, while the membership fee is non-refundable.
- Members who do not renew their membership on or before expiration will be considered leaving the service voluntarily.

Service Contents

Holistic care and timely support to family

- Consultation and provision of information
- Referral to suitable community resources
- Personal or family counselling
- Professional therapeutic groups
- Body-Mind-Spirit holistic well-being support



Identify strength and enjoy quality time with family

- Social and recreational groups
- Educational and developmental activities
- Quality family activities
- Resources lending service (Toys/ Books/ Audio)



Mobilise community to build a mutual aid and inclusive society

- Companion scheme and mutual aid network
- Volunteers and mentorship scheme
- Community education (Talk/ Exhibition/ Seminar)

